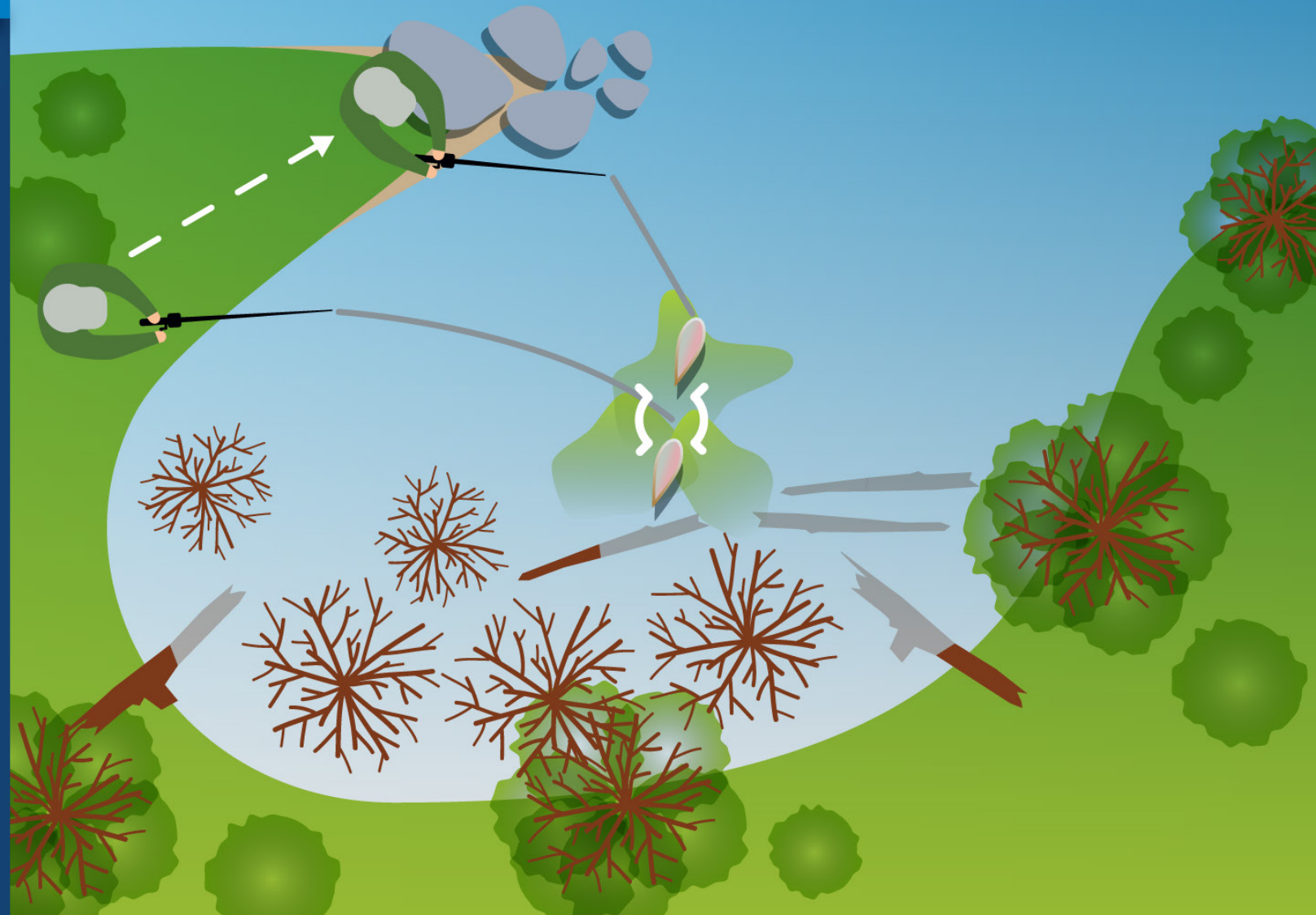


BAYS

ASSESS THE AREA

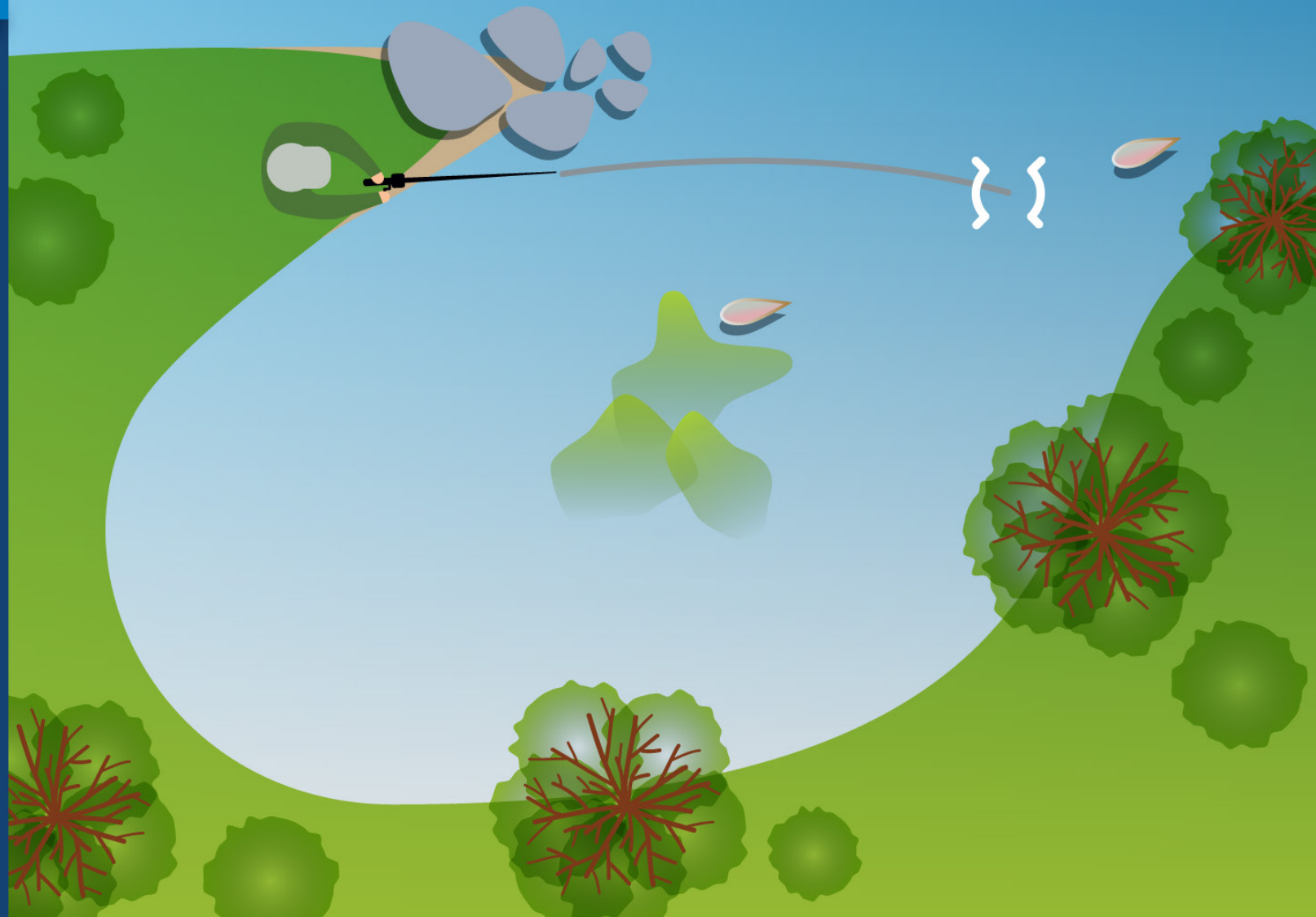
- **SUBMERGED TREES & LOGS CAN BE A HAVEN FOR TROUT**
- **YOU CAN CAST NEAR THESE AREAS OR SET UP A FEW BAIT RODS**
- **WHEN YOU CATCH A TROUT QUICKLY MOVE AWAY FROM LOGS & SNAGS**



BAYS

CASTING TARGETS

- CENTRE OF THE BAY FOR FEEDING OR RESIDENT TROUT
- ACROSS THE MOUTH OF THE BAY FOR TROUT LOOKING FOR FOOD SOURCES



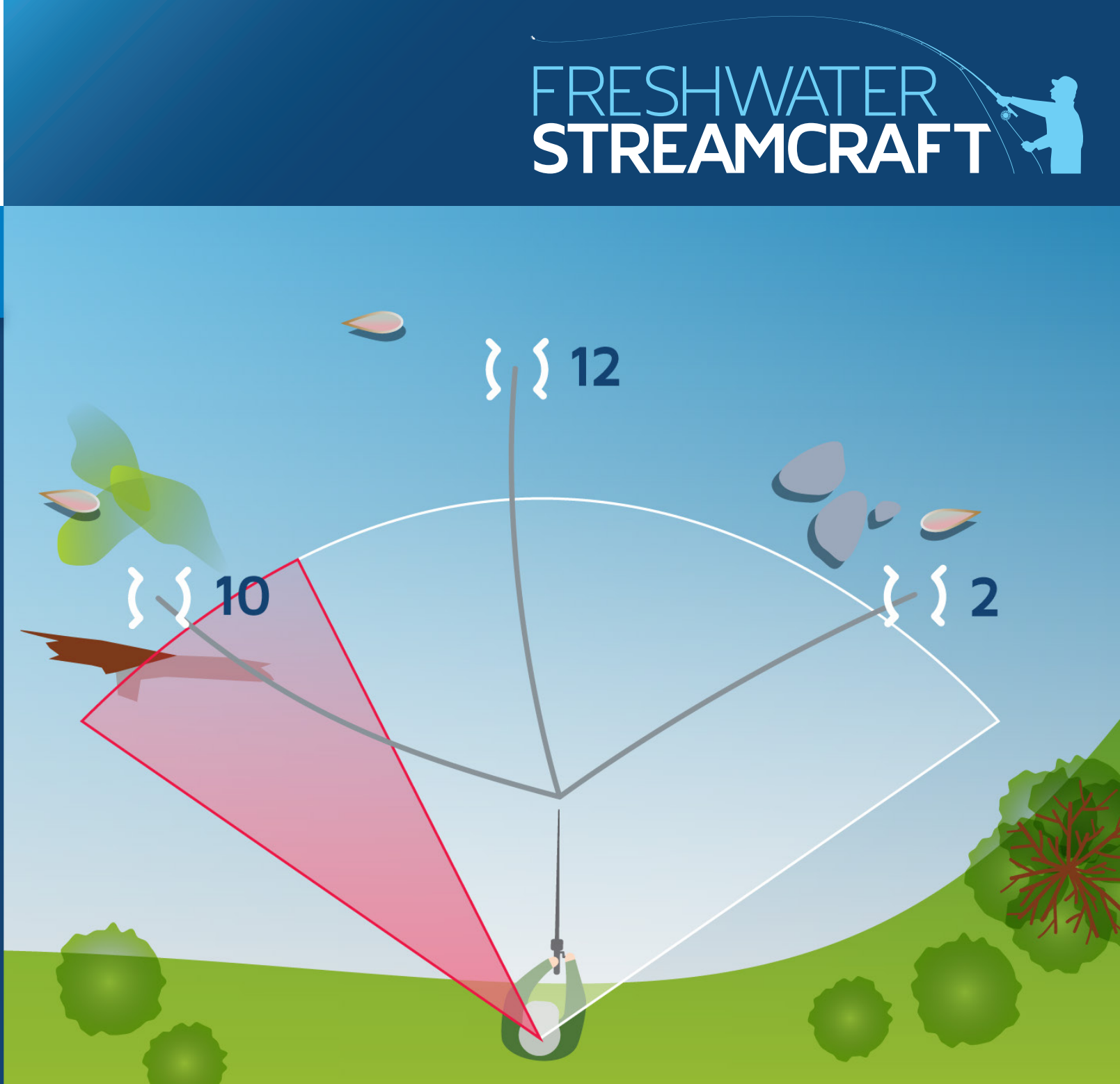
CASTING

10 : 12 : 2 METHOD

TO COVER AS MUCH
AREA AS POSSIBLE
TRY USING THIS
METHOD

CHECK THE 10 > 2 ARC
IN FRONT OF YOU IS
CLEAR FROM SNAGS

IF THERE ARE SNAGS
& DEBRIS AROUND
JUST AVOID CASTING
NEAR THEM





LOCAL, FRIENDLY & AFFORDABLE

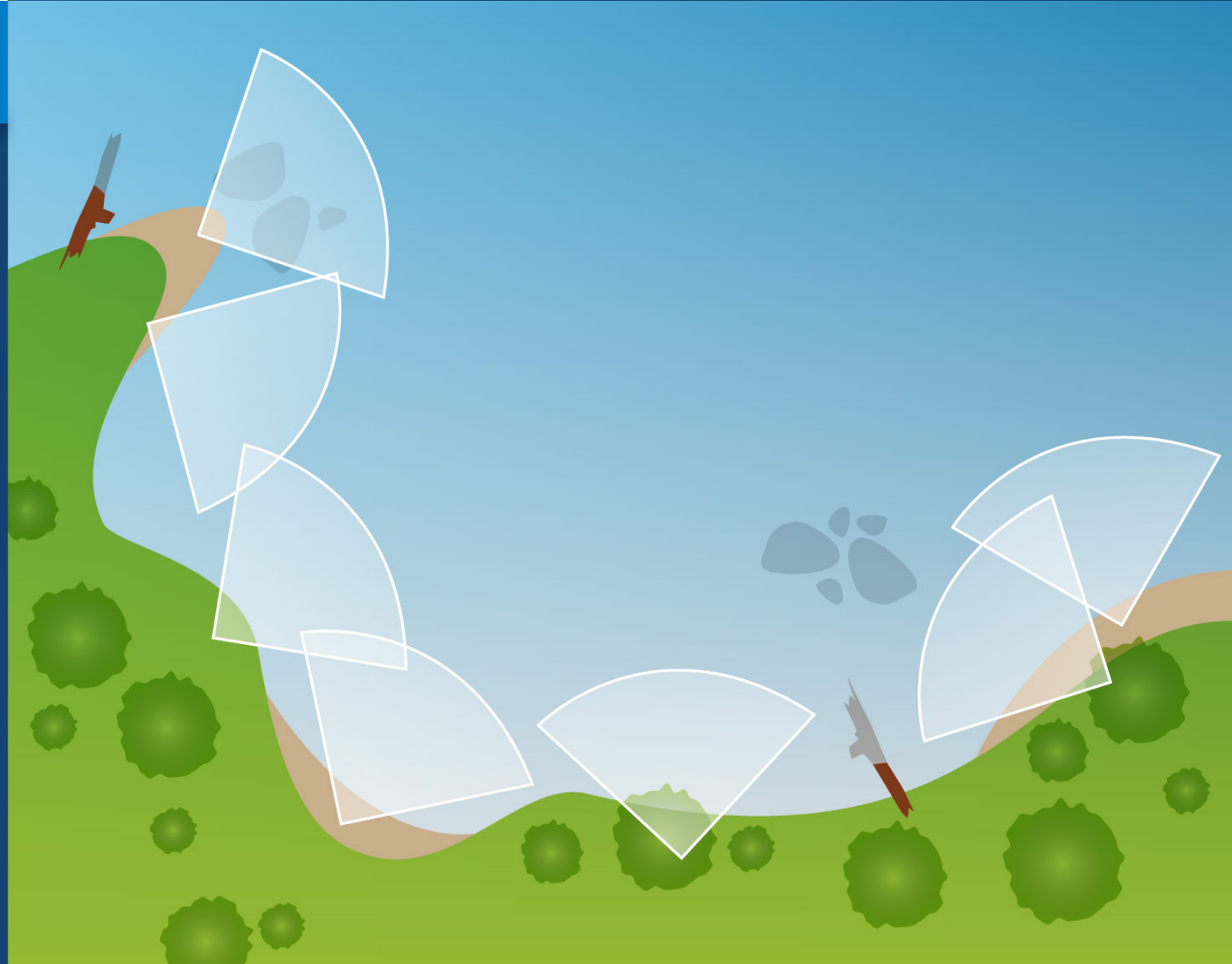
FRESHWATER STREAMCRAFT



CASTING

10 : 12 : 2 METHOD

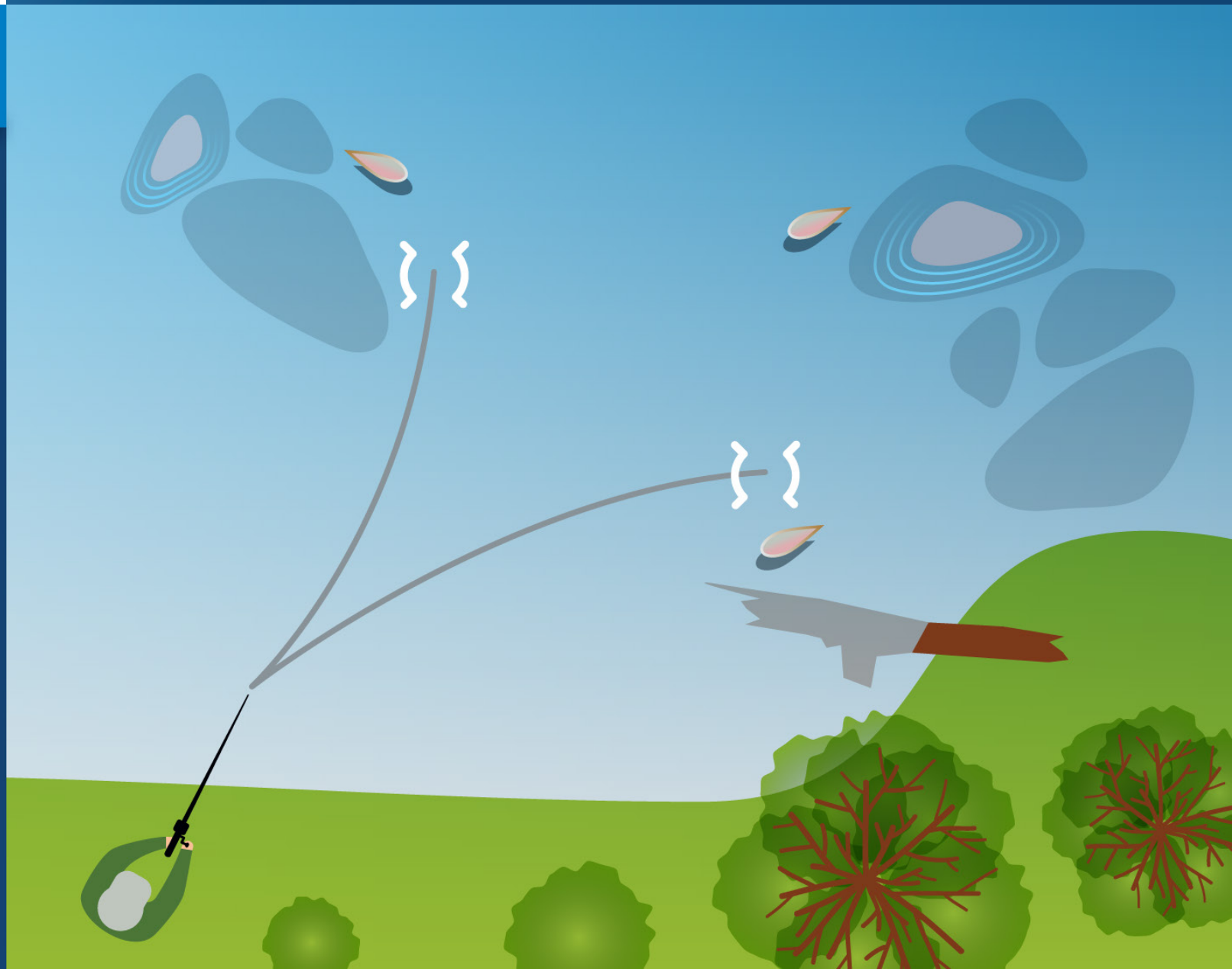
THE OVERALL AREA
YOU HAVE COVERED
WILL LOOK SIMILAR
TO THIS



LAKE EDGE

CASTING TARGETS

- **ROCKY POINTS, EDGES & OUTCROPS**
- **STRUCTURE ALONG THE LAKE EDGE & SUBMERGED TREES**
- **TROUT WILL TAKE REFUGE IN THESE AREAS & CRUISE THE EDGES LOOKING FOR FOOD**



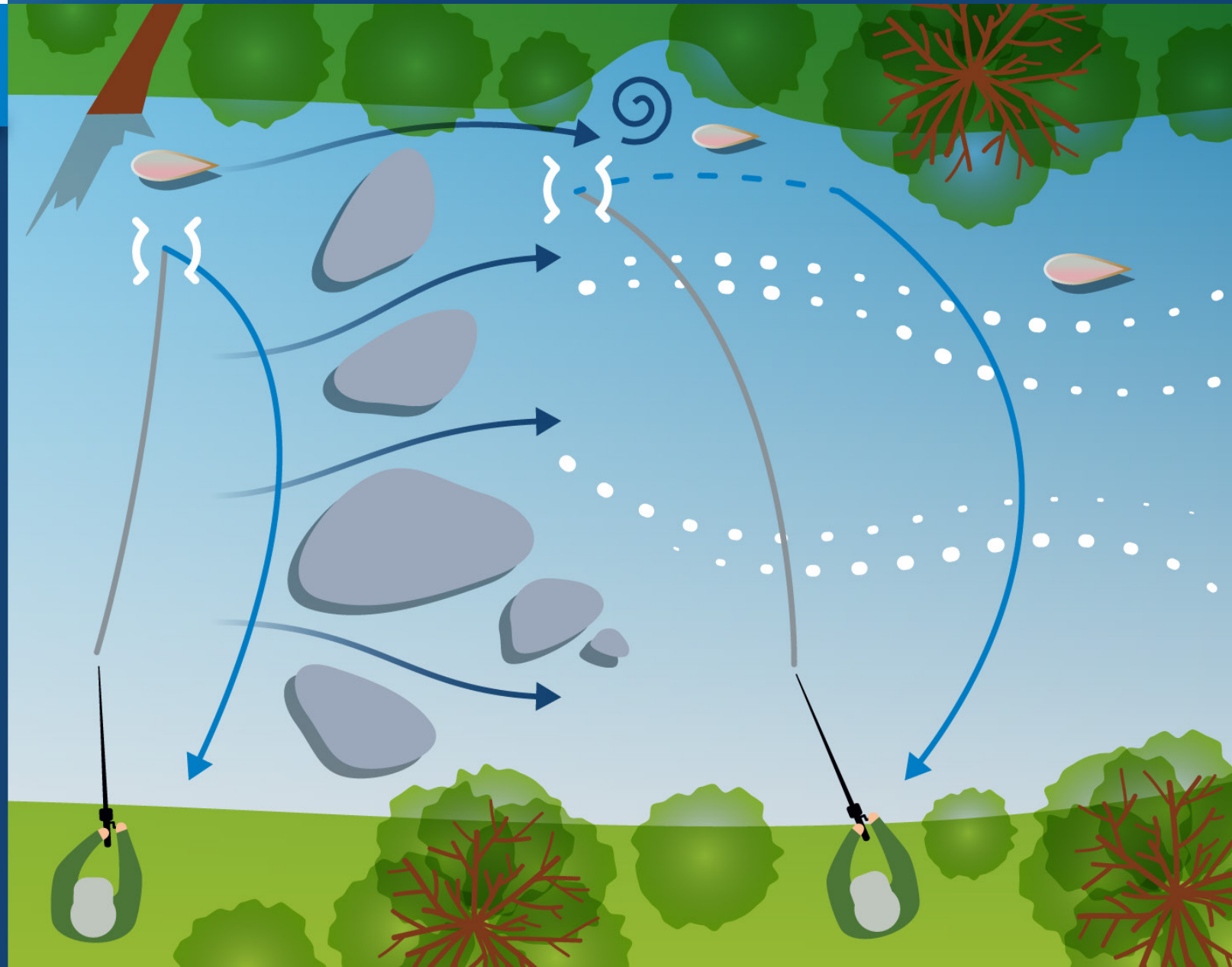
RIVERS

CASTING TARGETS

- › NEAR STRUCTURE
- › SHADOWED EDGES
- › EDDIES
- › FOAM & SCUM LINES

LURES

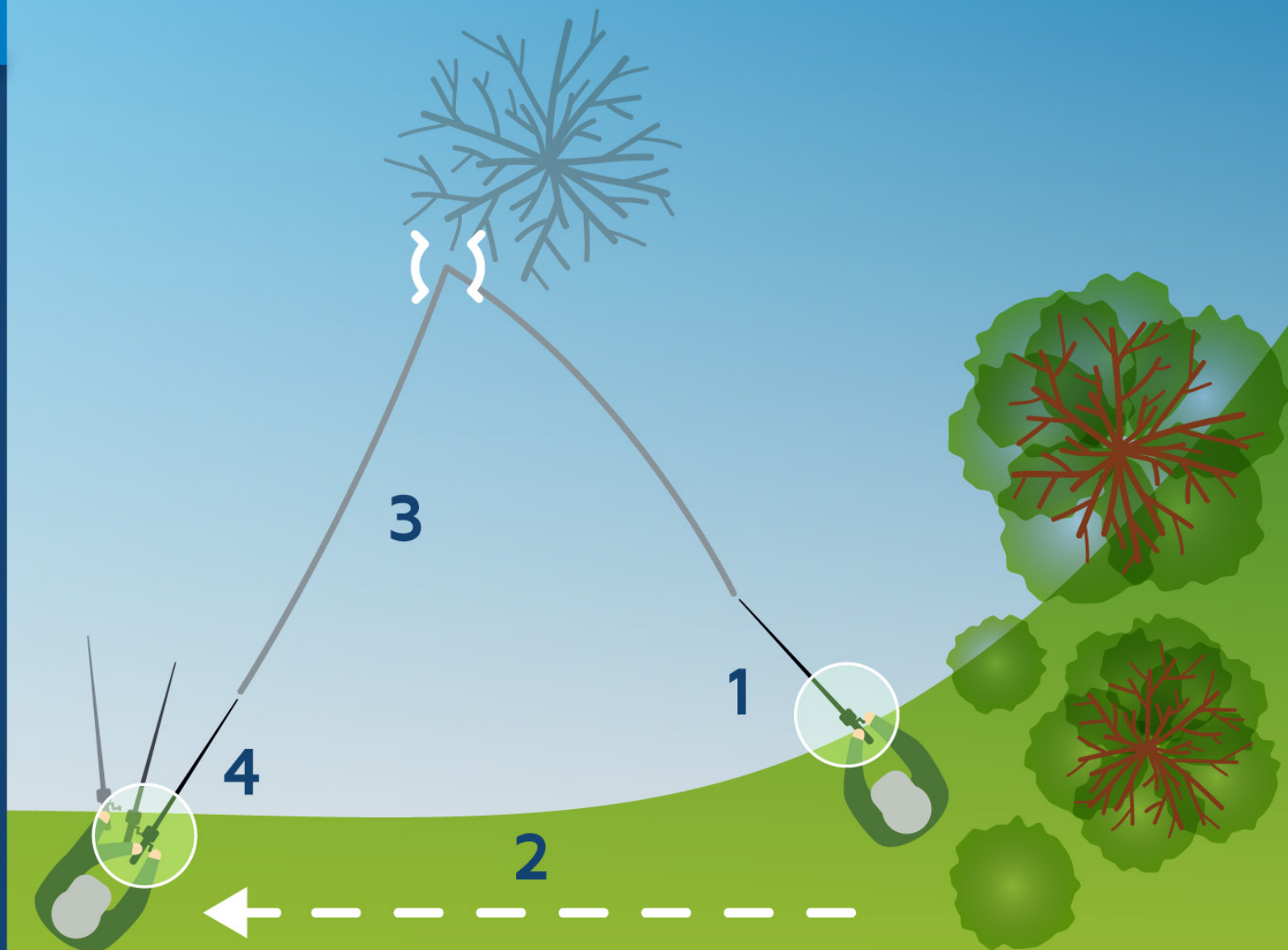
- › SPINNERS
- › CASTING FLIES
- › SOFT PLASTICS
- › SUSPENDING
- › FLOATING



SNAGS

RELEASING SNAGS

- 1 LOOSEN THE DRAG
- 2 WALK PAST SNAG
- 3 REEL IN SLACK LINE
- 4 GIVE THE LURE A FEW FLICKS AWAY FROM THE SNAG

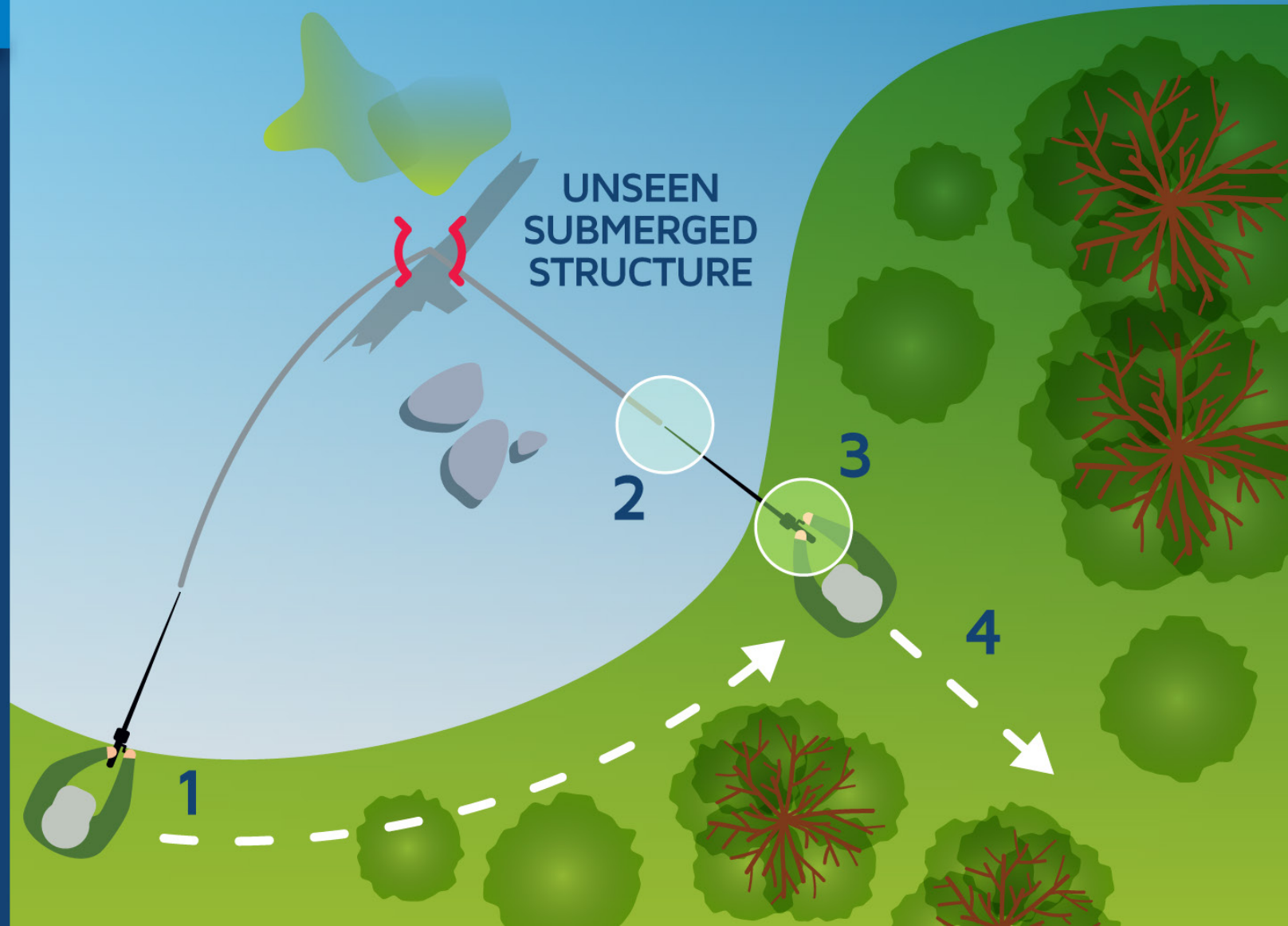


SNAGS

UNABLE TO RELEASE SNAG

- 1 GET YOUR ROD AS CLOSE TO THE SNAG AS POSSIBLE
- 2 POINT YOUR ROD DIRECTLY AT SNAG
- 3 REEL IN ALL YOUR SLACK LINE
- 4 HOLD THE REEL WITH YOUR HAND & WALK BACKWARDS

ILLUSTRATION © 2025 LAKESIDE LURES & TACKLE





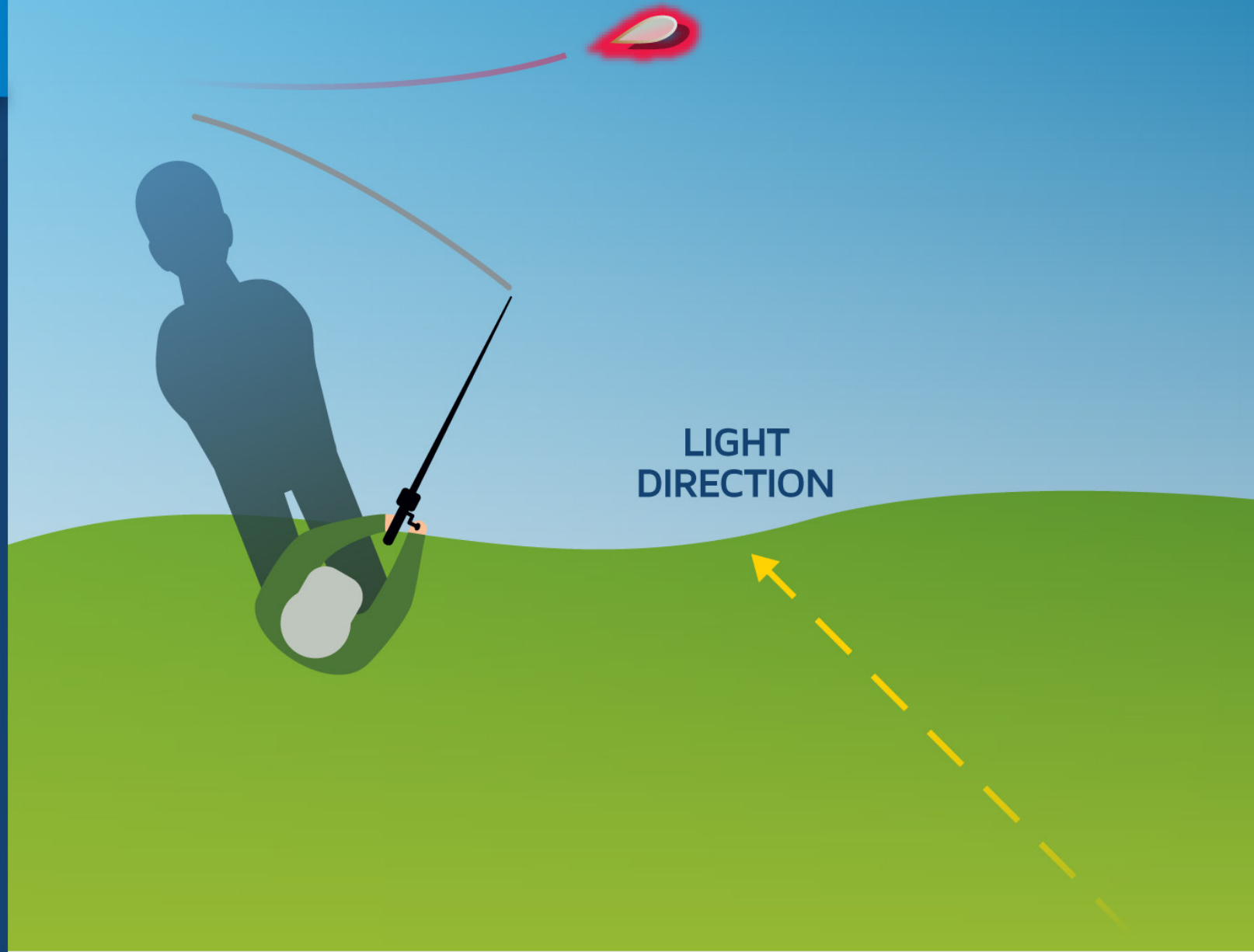
FRESHWATER STREAMCRAFT



LAKE EDGE

WEATHER: WIND & LIGHT

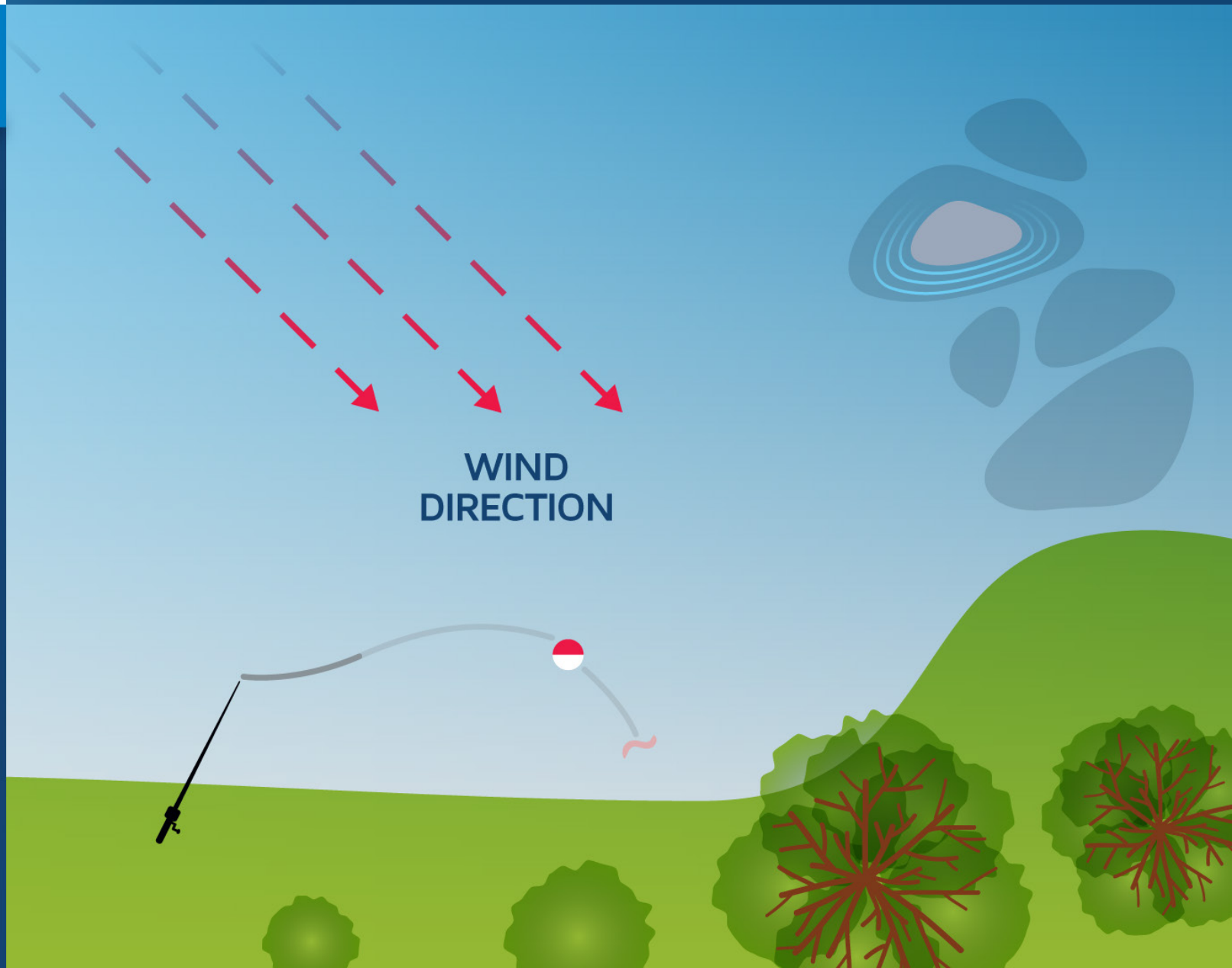
- > WHILE CASTING A LURE MAKE SURE YOUR SHADOW IS BEHIND YOU
- > WHEN A TROUT FOLLOWS YOUR LURE TO THE BANK YOUR SHADOW ON THE SURFACE CAN SPOOK THEM



LAKE EDGE

WEATHER: WIND & LIGHT

- SHOULD THE WIND DIRECTION CHANGE MOVE TO ANOTHER LOCATION
- OTHERWISE YOUR BAIT RIG WILL BLOW BACK TO SHORE



LAKE EDGE

WEATHER: WIND & LIGHT

- › IF THERE'S WIND CAST WITH IT
- › THIS NEGATES THE LURE BEING CAUGHT IN THE LINE WHEN YOUR CASTING
- › IT ALLOWS MORE DISTANCE WHEN CASTING & YOUR BAIT RIGS WILL STAY OFFSHORE

